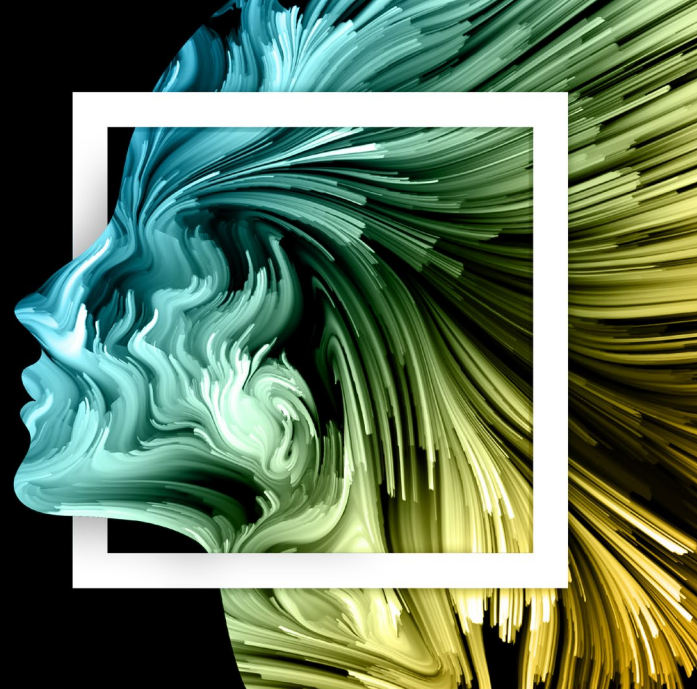


# AN UNCERTAIN WORLD

## PLANNING FOR 2025 AND BEYOND

Wednesday 12 – Friday 14 October 2016  
Prague • 8th CRF International Conference



Corporate Research Forum (CRF) is a leading network for multinational businesses, including 40% of the FTSE 100. CRF's annual international conference is one of the largest gatherings of senior HR Directors in Europe, delivering two days of intellectual challenge, stimulation and learning.

The conference will address the need to take an informed view of the future, defining the key issues, and risks and opportunities they present. Chaired by Dr Margaret Heffernan, the first-class speaker line-up includes:

- Professor Arturo Bris, IMD Business School
- Professor Ian Goldin, Oxford Martin School, University of Oxford
- Dr. Carsten Sørensen, London School of Economics
- Edward Carr, Deputy Editor, *The Economist*
- Paul Schoemaker, The Wharton School, University of Pennsylvania

The antithesis of 'sit and listen', the conference is the event of choice for those looking to be selective in their use of time and discerning in choice of fellow attendees. For more information please click [here](#).

### WHY ATTEND?

Book your place at CRF's International Conference and benefit from:

- the latest insights and learnings regarding the future political, technological, economic and social outlook
- practical recommendations derived from engaging speakers and peer-to-peer discussions
- a unique blend of learning, sharing and relationship building among the 450+ senior level attendees.

View the highlights from the 2015 CRF International Conference in Vienna [here](#).

### REGISTRATION FEE

The conference is aimed at senior HR practitioners and business leaders currently working within corporate and private organisations.

CRF members qualify for two places as part of their annual membership. Attendance for non-members costs £1,500 + VAT (excluding flights and accommodation).

To book your place at this unique event please contact Lynn Little at [lynn@crforum.co.uk](mailto:lynn@crforum.co.uk) or +44 (0) 20 7470 7104. For further information please visit [www.crforum.co.uk](http://www.crforum.co.uk).

### DATE

Wednesday 12th – Friday 14th October 2016  
Wednesday 12th (welcome drinks reception): 19.00 – 21.00  
Thursday 13th: 09.00 – 17.00 (followed by dinner)  
Friday 14th: 09.00 – 15.30

### LOCATION

Hilton Prague  
Pobrezni 1  
Prague 186 00,  
Czech Republic

### OVER 200 ATTENDEES ALREADY CONFIRMED FROM ORGANISATIONS INCLUDING:

ARM  
Associated British Foods  
Barcardi  
BT  
Direct Line  
Discovery Communications  
European Commission  
Experian  
Gatwick Airport  
Gazprom  
GlaxoSmithKline  
Hilton  
Imperial Tobacco  
ITV  
Liberty Global  
Lloyds Banking Group  
Mercedes-Benz  
Merck  
News UK  
Prudential  
Rolls-Royce  
SABMiller  
Siemens  
Sky  
Sony  
Standard Life  
TalkTalk  
Tesco  
Thomson Reuters  
Unilever  
Vodafone  
Whitbread  
Worldpay

*"One of the best  
conferences I have attended.  
Excellent content, highly  
provocative and extremely  
thought provoking."*

ALLAN E COOK CBE  
CHAIRMAN, WS ATKINS