

# The greatest Leadership challenge

---

IMPACTS ON HOW  
WE ASSESS AND  
DEVELOP TALENT



```
... for object to mirror...  
mirror_mod.mirror_object = ...  
operation = "MIRROR_X":  
mirror_mod.use_x = True  
mirror_mod.use_y = False  
mirror_mod.use_z = False  
operation = "MIRROR_Y":  
mirror_mod.use_x = False  
mirror_mod.use_y = True  
mirror_mod.use_z = False  
operation = "MIRROR_Z":  
mirror_mod.use_x = False  
mirror_mod.use_y = False  
mirror_mod.use_z = True
```

```
#selection at the end -add  
mirror_ob.select= 1  
mirror_ob.select=1  
context.scene.objects.active  
("Selected" + str(modifier_name))  
mirror_ob.select = 0  
= bpy.context.selected_objects  
data.objects[one.name].select  
print("please select exactly one object")
```

```
--- OPERATOR CLASSES ---  
bpy.types.Operator):  
"X mirror to the selected  
object.mirror_mirror_x"  
"mirror X"  
context):  
active_object is not
```



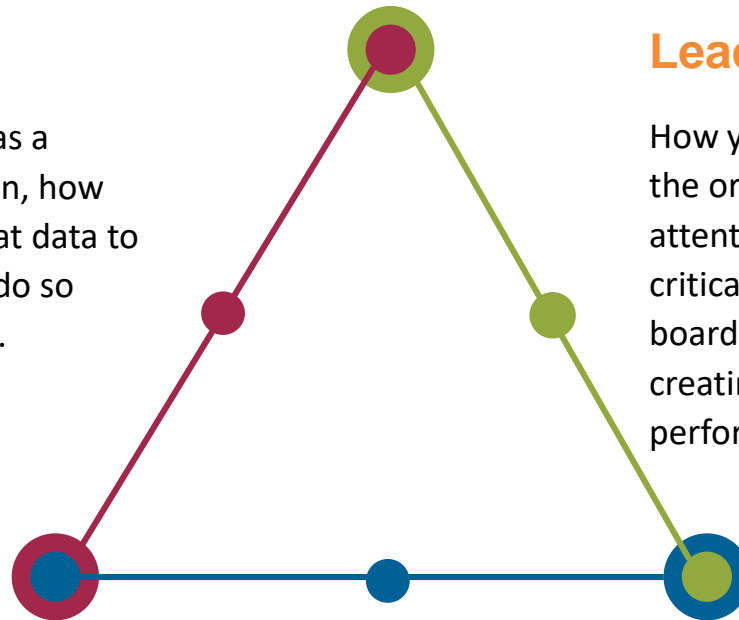
# Readiness for Scale<sup>SM</sup> Model

## Leading Business

All the content you manage as a leader—what data you take in, how you manage and leverage that data to make decisions, and how to do so along multiple time horizons.

## Leading People

How you galvanize the human assets of the organization to deliver—aligning attention and resources with the most critical work, getting stakeholders on board and aligned with the direction, and creating a culture that enables high performance.



## Leading Self

The underpinnings of an adaptive and sustainable leader—having the agility, resilience, and self-awareness to sustain and develop over time.















良心有勇氣  
港人！

SUPPORT

CHINA'S

ST GEORGE

御衛  
公自

光復香  
港地

遊行集會  
Oppose Extradition to China

香港人加油  
復光復香港

反送中  
人撐到底 送中送歸

抗爭



**COMPLIANCE**

**STANDARDS**

**POLICIES**

**REGULATIONS**

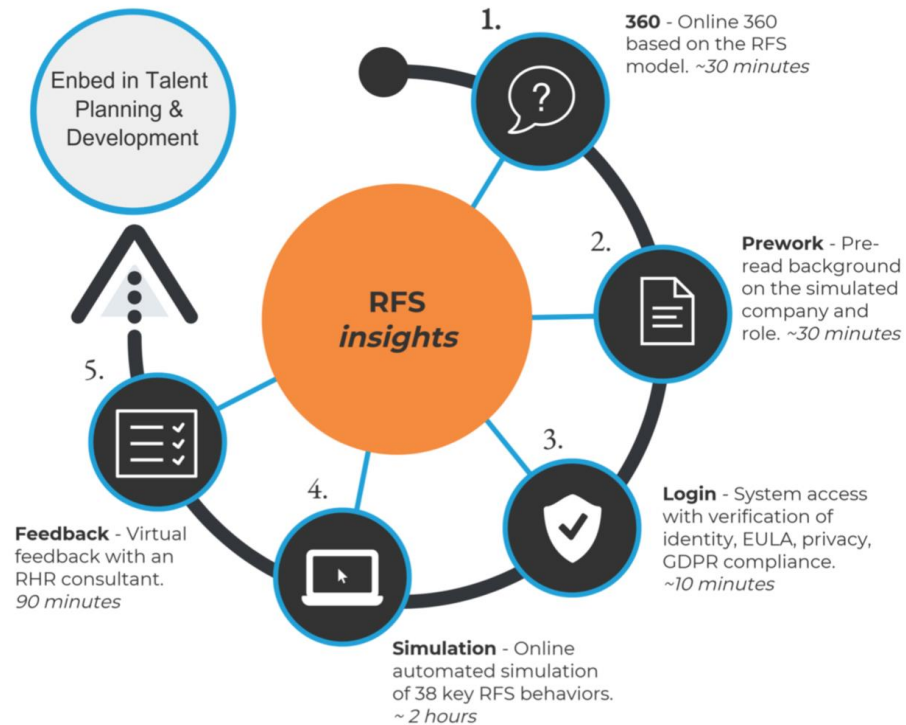
**RULES**

The learnin





# The Assessment Process



# Thank You!